

User Guide for the E Ink T1000 App with Digital View controller boards*,

- EPM-100v2
- EPL-100



2021-04-20

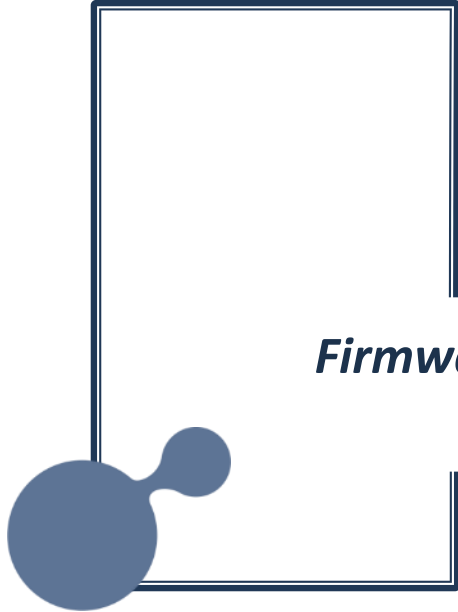
©2024 Digital View



www.digitalview.com

*Referred to as "DV board" throughout






Firmware Update

Firmware Update

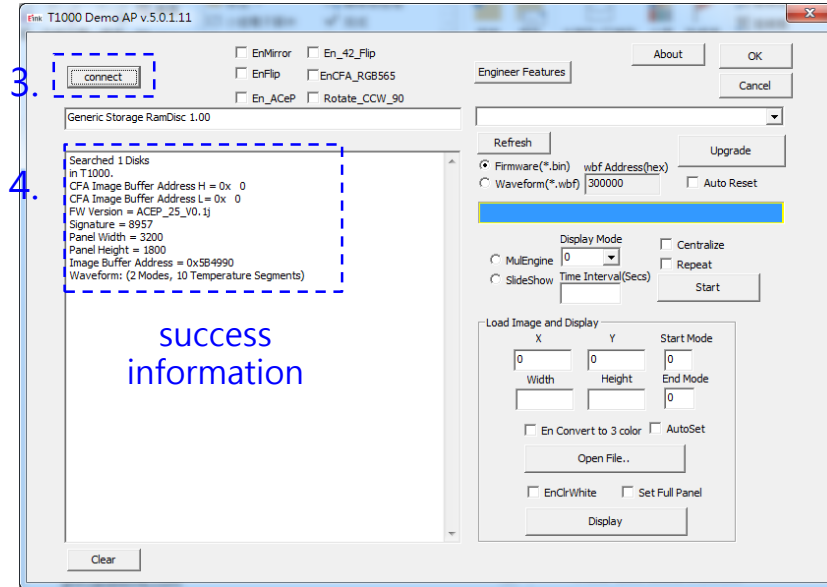
Update FW:

1. Connect a DV board to a computer (it is not necessary to connect a panel)
2. Double click the "T1000_Windows_AP_5.0.1.11.exe" file to start the software
3. Click the "connect" button to connect the DV board
4. If the DV board connection to the PC is a success, the software will show information

2.  T1000_Windows_AP_5.0.1.11.exe



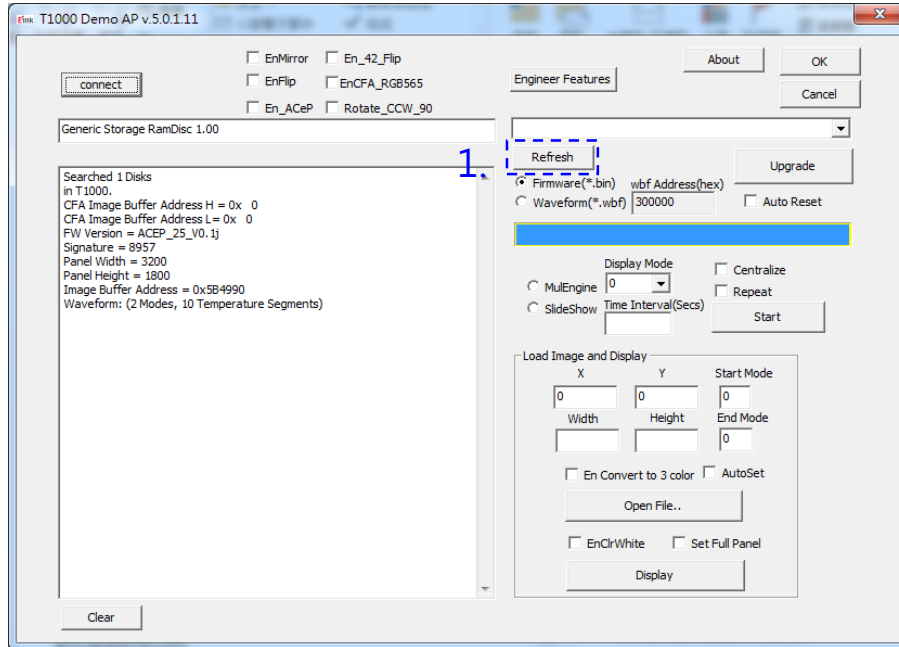
1. connect to computer



Firmware Update

Update the Firmware: Step 1

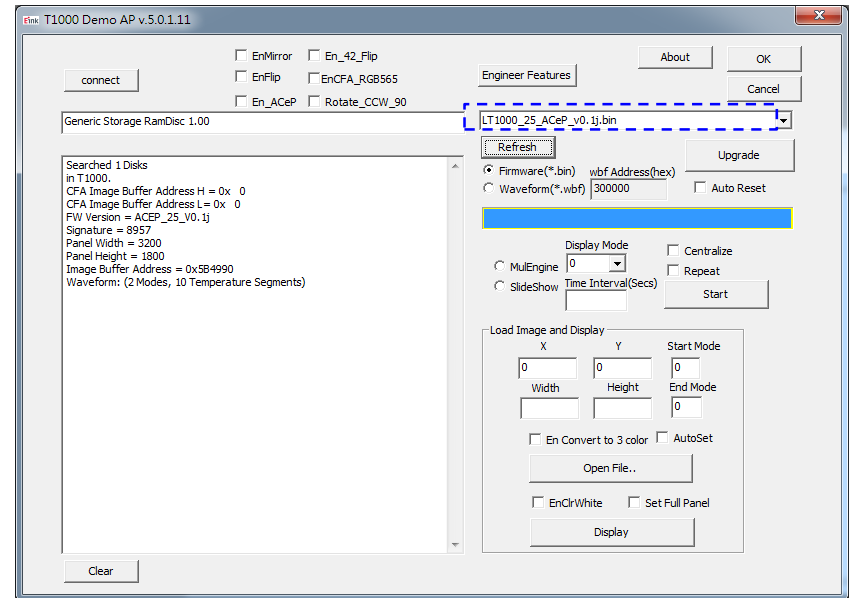
1. Click the “Refresh” button
2. Select the firmware version
3. Click “Upgrade” button to update the firmware for the DV board
4. If the update is a success, please re-plug the power (reset)



Firmware Update

Update the Firmware: Step 2

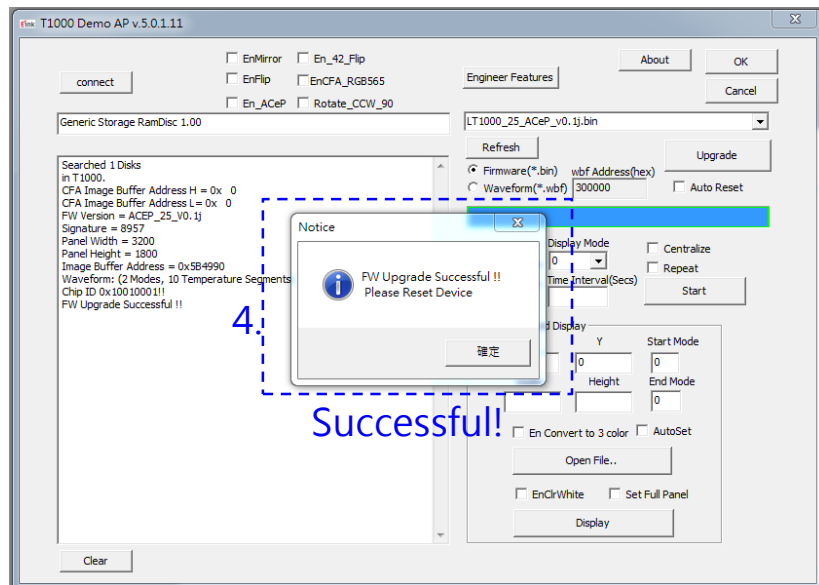
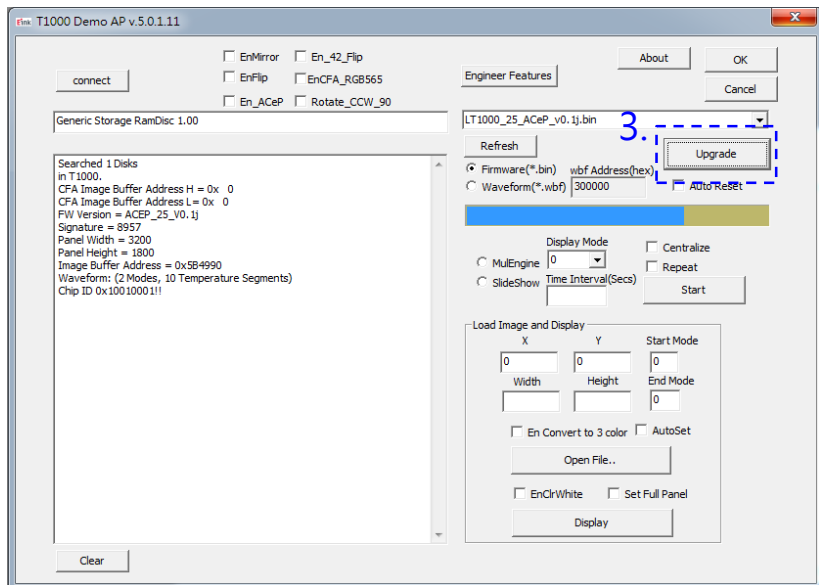
1. Click “Refresh” button
2. Select the firmware file (the app and the firmware file should be in the same folder on your PC)
3. Click “Upgrade” button to update FW for the DV board
4. If update is success, please re-plug the power(reset)



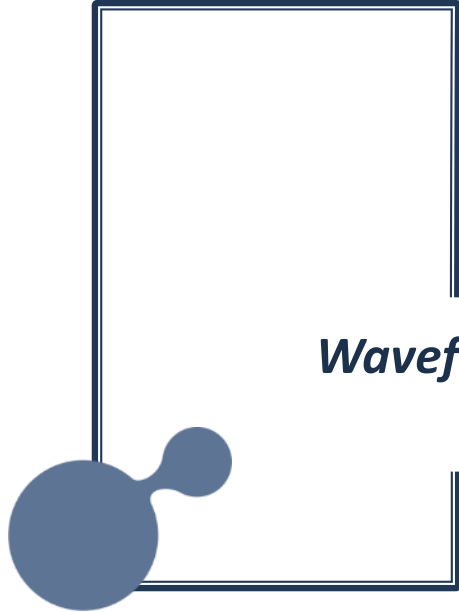
Firmware Update

Update the Firmware: Steps 3 & 4

1. Click “Refresh” button
2. Select the FW version
3. Click the “Upgrade” button to update the firmware on the DV board
4. If the update is a success, please re-plug the power (reset)



Successful!

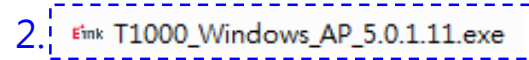


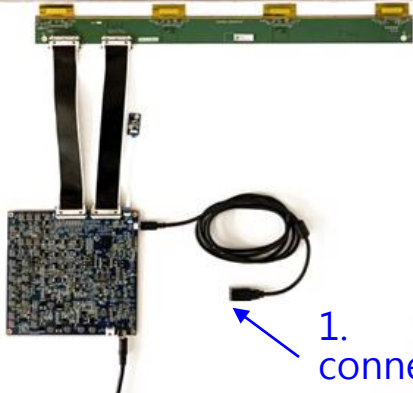
Waveform Update

Waveform Update

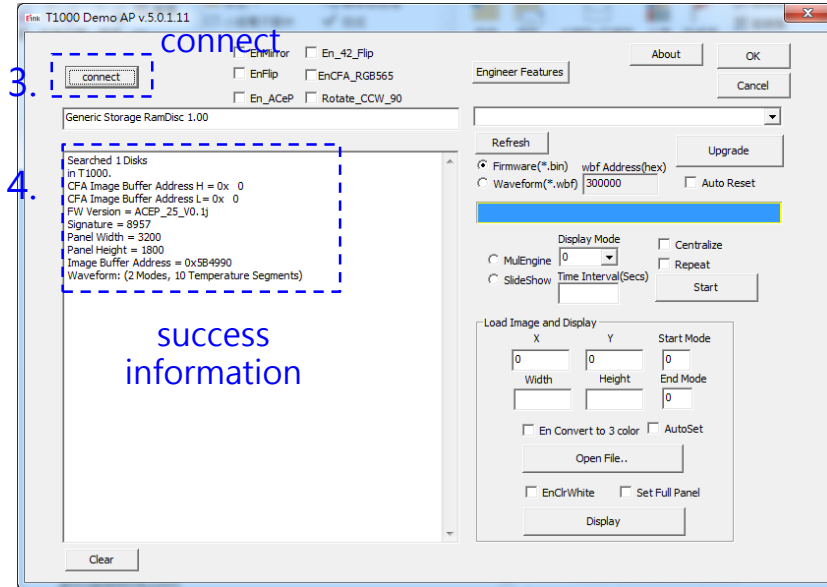
Update the Waveform: Connection

1. Connect the DV board to a computer (it is not necessary to connect the panel)
2. Double click the "T1000_Windows_AP_5.0.1.11.exe" file to start the software
3. Click the "connect" button to connect the DV board
4. If the DV board connection to the PC is a success, the app will show information

2. 



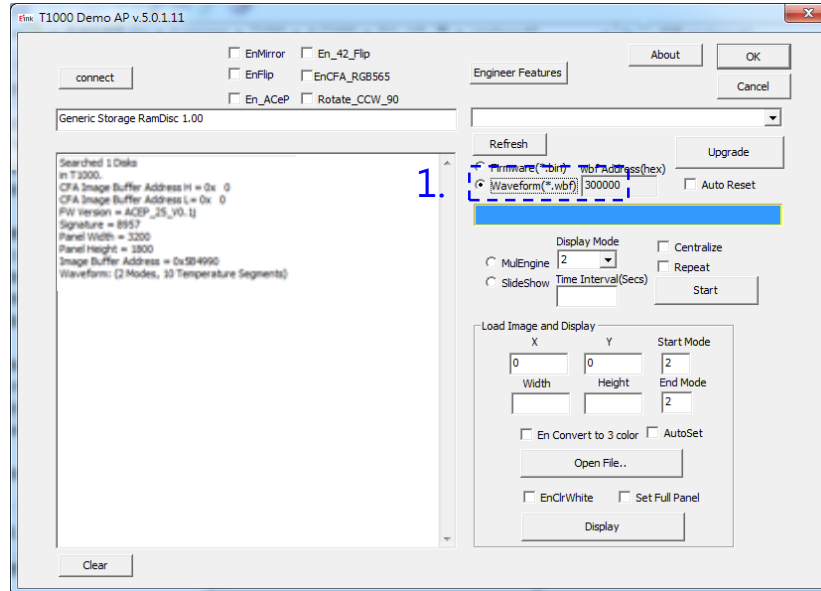
1. connect to computer



Waveform Update

Update the Waveform: Step 1

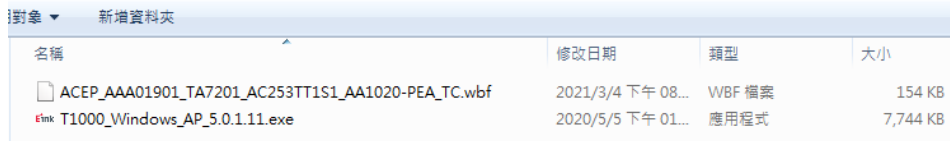
1. Select the “Waveform” version
2. Click “Refresh” button
3. Click “Upgrade” button to update the DV board
4. If update is success, please re-plug the power(reset)



Waveform Update

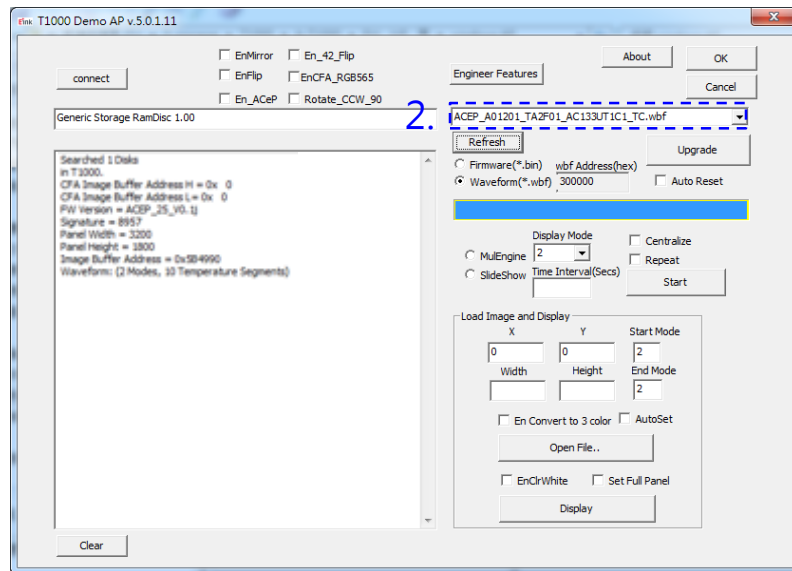
Update the Waveform: Step 2

1. Select the “Waveform” version
2. Click the “Refresh” button
3. Click “Upgrade” button to update the waveform for the DV board
4. If update is success, please re-plug the power(reset)



名稱	修改日期	類型	大小
ACEP_AAA01901_TA7201_AC253TT1S1_AA1020-PEA_TC.wbf	2021/3/4 下午 08...	WBF 檔案	154 KB
T1000_Windows_AP_5.0.1.11.exe	2020/5/5 下午 01...	應用程式	7,744 KB

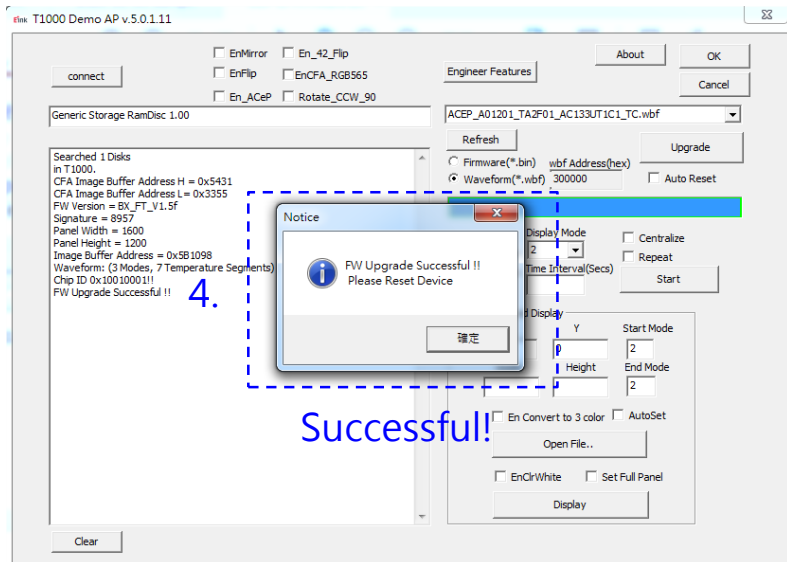
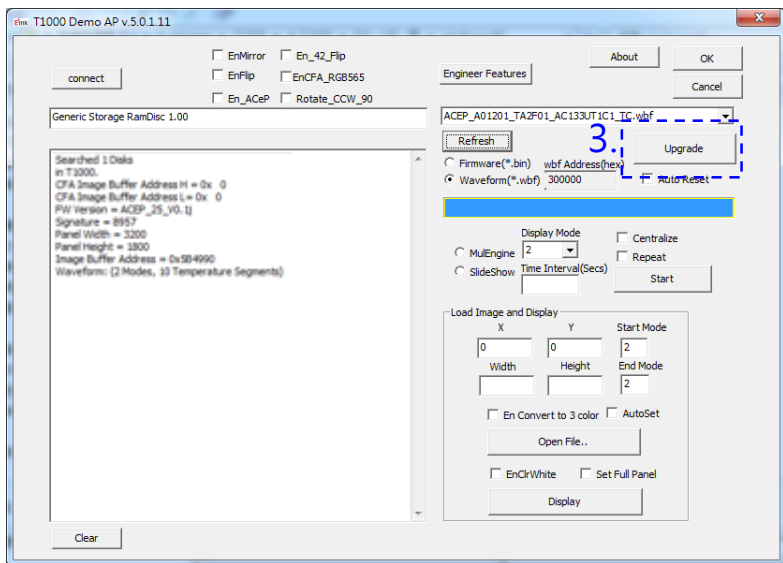
Note: Demo AP and WF file should be in the same folder



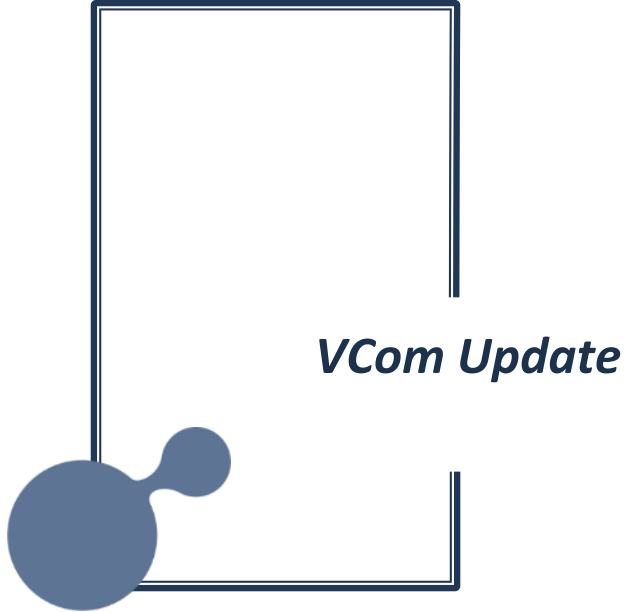
Waveform Update

Update the Waveform: Step 3

1. Select the “Waveform” version
2. Click “Refresh” button
3. Click “Upgrade” button to update waveform for the DV board
4. If the update is successful, re-plug the power (reset)



Successful!

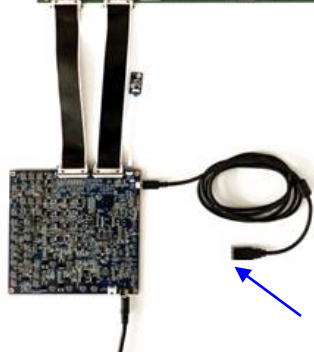


VCom Update

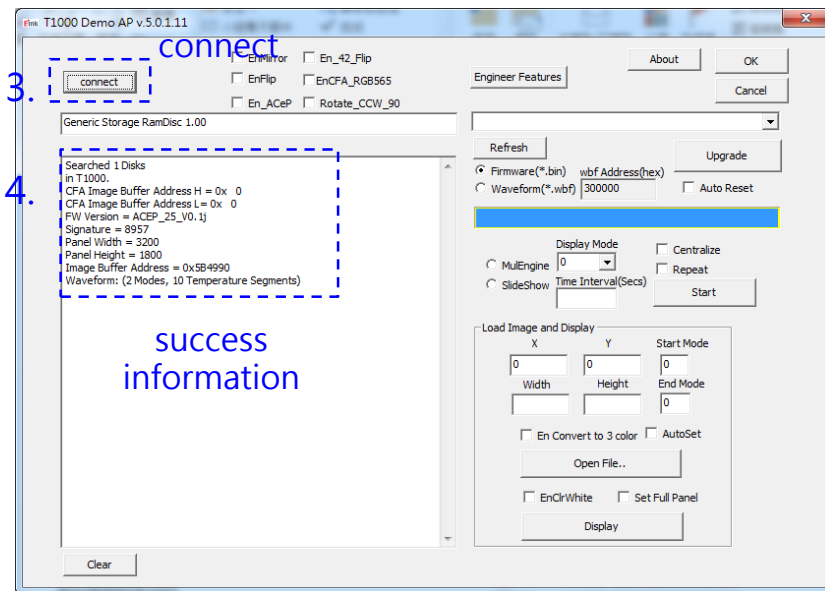
Update VCom: Connection

1. Connect the DV board to a computer (it is not necessary to connect a panel)
2. Double click the "T1000_Windows_AP_5.0.1.11.exe" file to start the software
3. Click the "connect" button to connect the DV board
4. If the DV board connection to the PC is successful, the software will show information

2. T1000_Windows_AP_5.0.1.11.exe



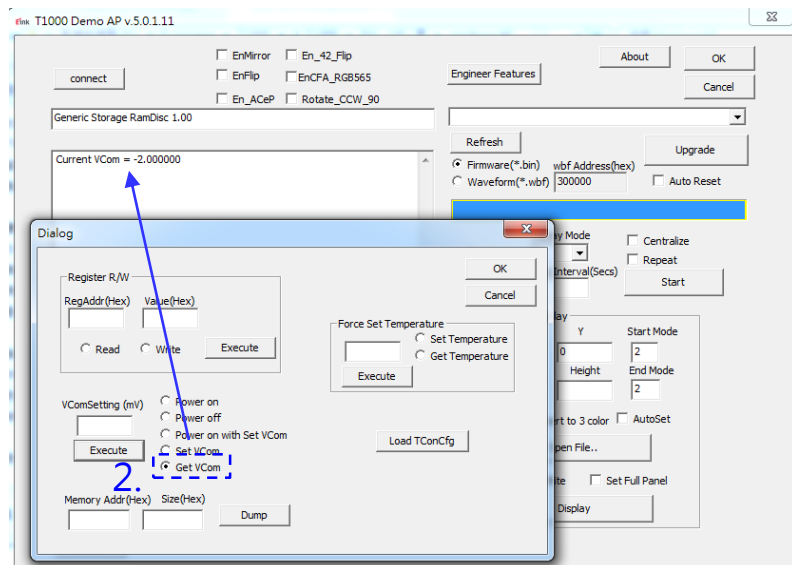
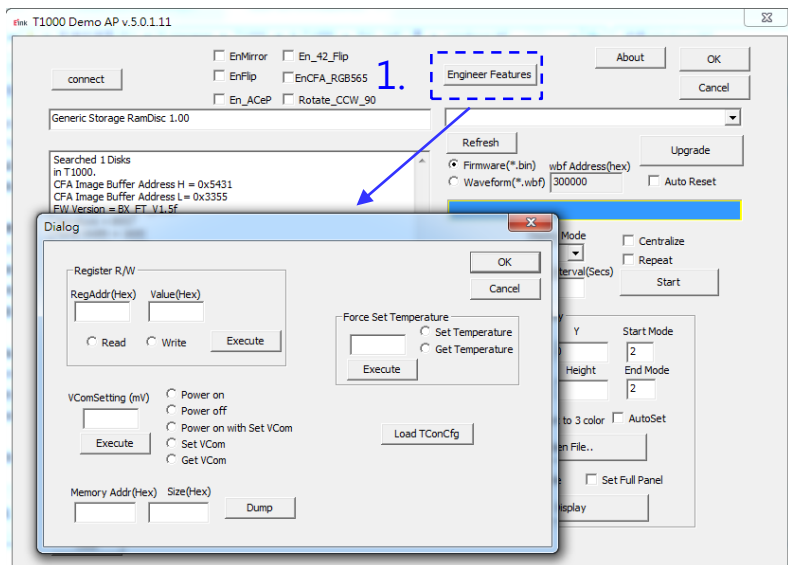
1. connect to computer



VCom Update

Update VCom: Steps 1 & 2

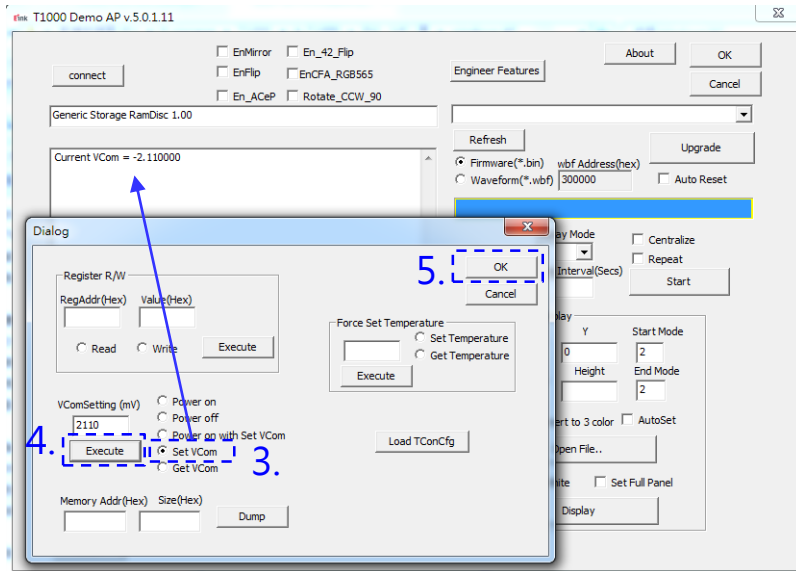
1. Click the “Engineer Features” button, the “Dialog” window will pop up
2. Click item “Get VCom”, it shows the internal VCom default
3. Click item “Set VCom”, then check the value shown “on the EPD FPC ”and write it into the“ VComSetting” field. For example: if the value is“-2.11”,please write down“2110”
4. Click “ Execute” to implement the value, and check the status field to check the value



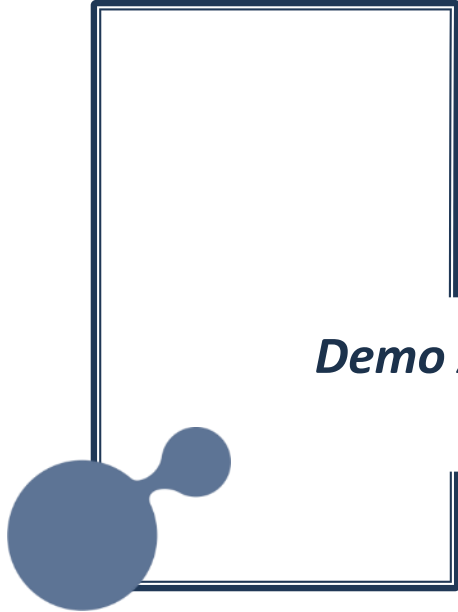
VCom Update

Update VCom: Steps 3 & 4

1. Click “Engineer Features” button, the “Dialog” window will pop up
2. Click item “Get VCom”, FW internal VCom default
3. Click item “Set VCom”, then check the value shown “on the E Ink panel FPC ”and write it into the “VComSetting” field. For example: if the value is “-1.80”, please write down “1800”
4. Click “Execute” to set the value, and check the status field to check the value



VCom value

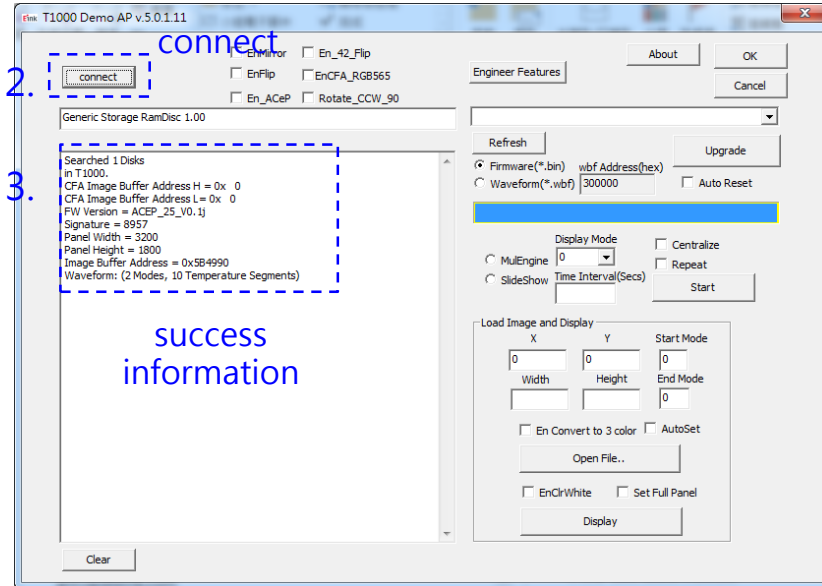


Demo App Operation - Display an image

Demo App Operation - Display an image

Display an image – check connection

1. Double click the “T1000_Windows_AP_5.0.1.11.exe” file to start the software
2. Click the “connect” button to connect the DV board
3. If the connection is successful, the app will show information in the window

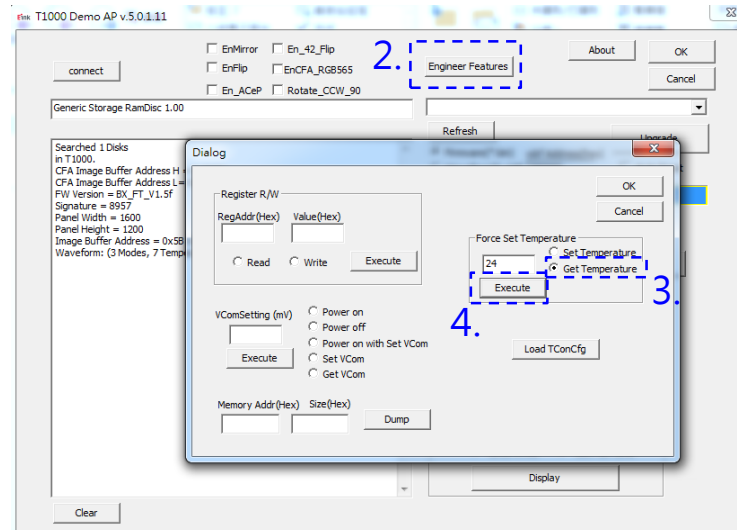


1. T1000_Windows_AP_5.0.1.11.exe

Demo App Operation - Display an image

Display an image: Check the current temperature

1. Before executing the image display, check the current Temperature by reading the temperature sensor
2. Click “Engineer feature”
3. Click “Get temperature”
4. Click “Execute”, to read out current temperature from the DV board
5. The temp is important for choosing the correct image rendering data (rendering data is temp dependency) while processing image rendering

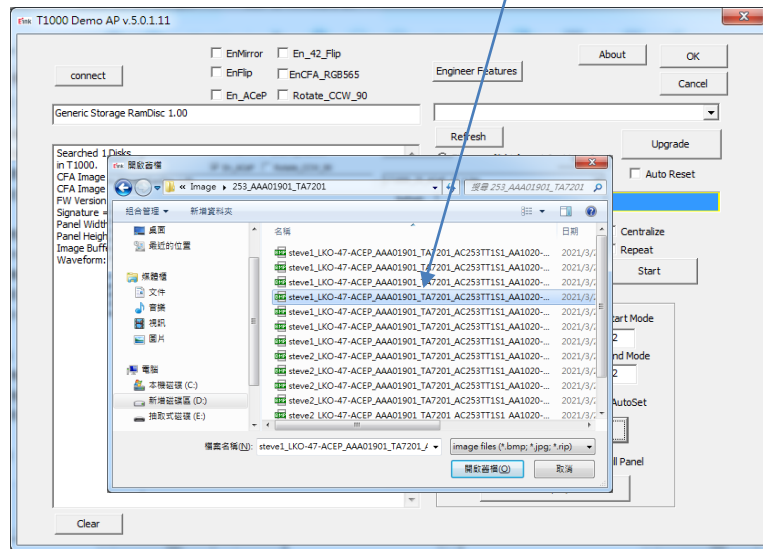
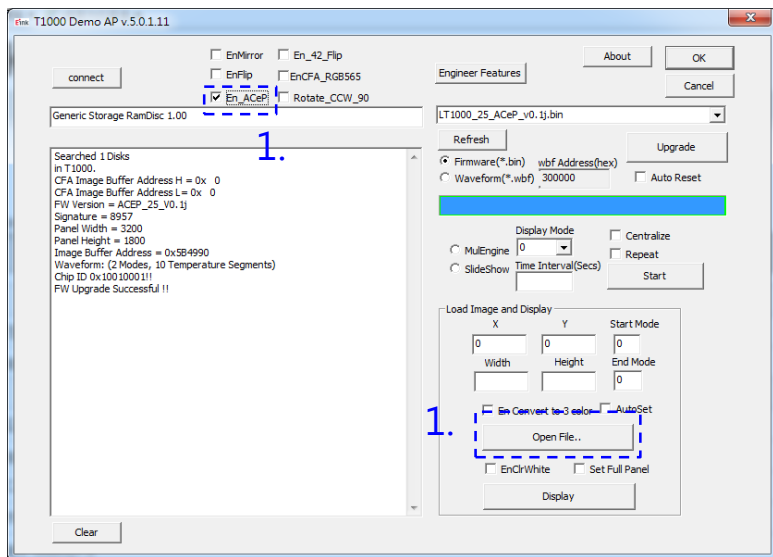


Demo App Operation - Display an image

Display an image: Step 1

1. First Click the "En_AcEP" then "Open File.." button to load the image to the DV board
2. If image loading is done, window will show up
3. Type in "1" for End mode and "0" for start mode
4. Check "SetFullPanel" and set the correct resolution
5. Click "Display" button to show the image on panel

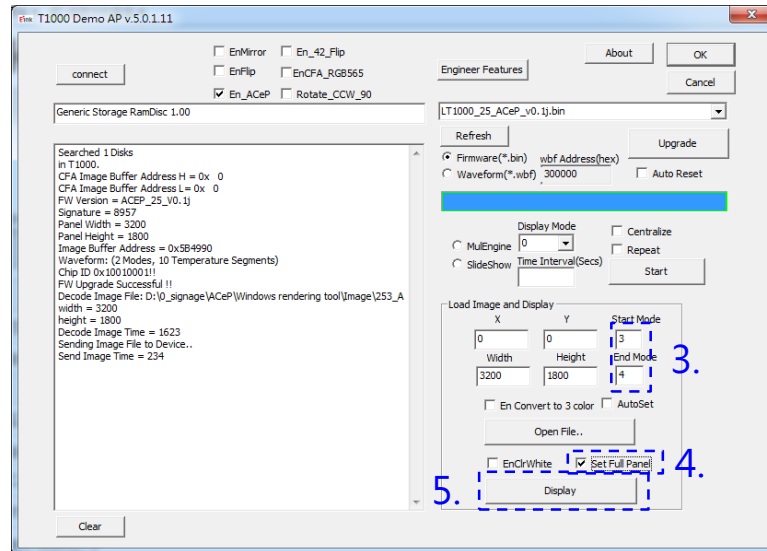
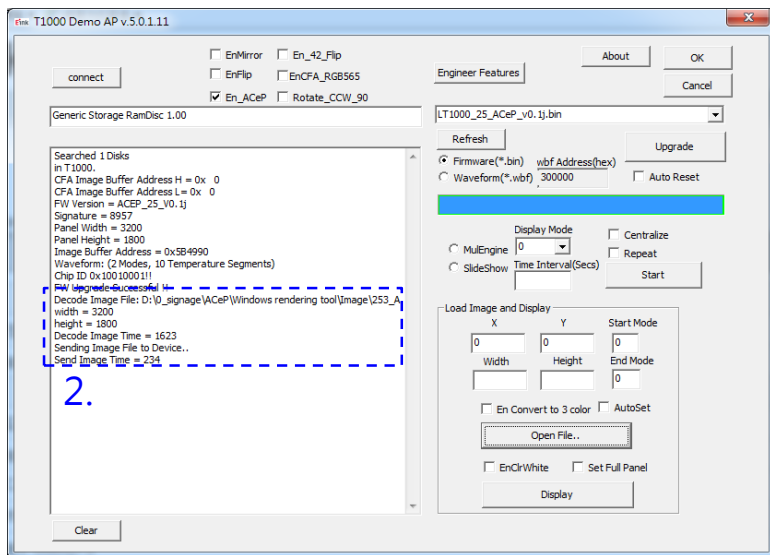
image should be rendering by corresponding rendering temp data

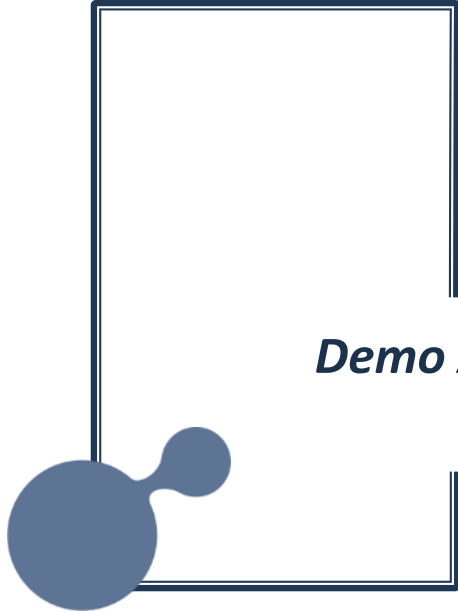


Demo App Operation - Display an image

Display an image: Steps 2 to 5

1. Click the “Open File..” button to load the image to the DV board
2. If image loading is done, it will show in the window
3. Type in “4” for End mode and “3” for start mode
4. Check “SetFullPanel” and set the correct resolution
5. Click the “Display” button to show the image on the panel (finished!)



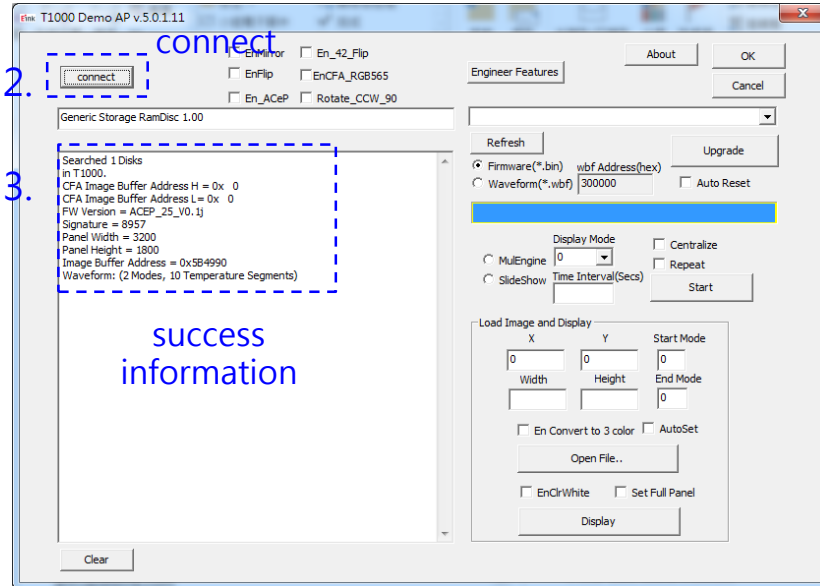



Demo App Operation - Display a white image

Demo App Operation - Display a white image

Display a white image – check connection

1. Double click the “T1000_Windows_AP_5.0.1.11.exe” file to start the software
2. Click the “connect” button to connect the DV board
3. If the connection is a success, the app will show information in the window



1.  T1000_Windows_AP_5.0.1.11.exe

Demo App Operation - Display a white image

Display a white image - display

1. Type in “1” for End mode and “0” for start mode
2. Check “SetFullPanel” and set the correct resolution
3. Click “Display” button to show the white image on panel (Finish!)
4. If you want to display an image, repeat display image

